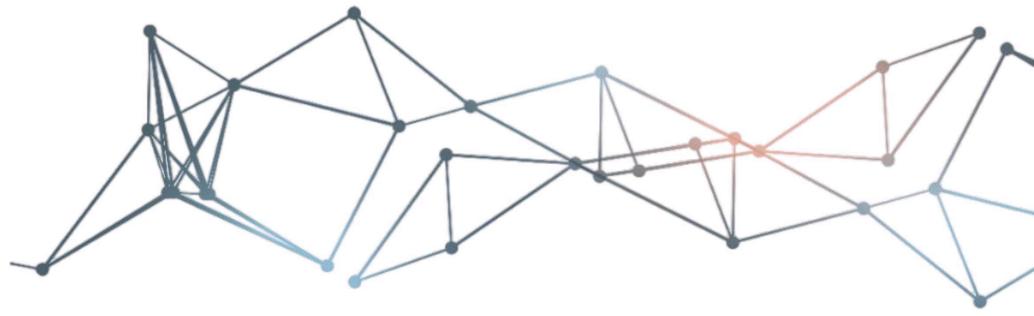




evergreen  
Constructions

“Crafting Dreams, Building Futures. Safety First, Progress Always  
Let’s Build Together!”



# WELCOME TO

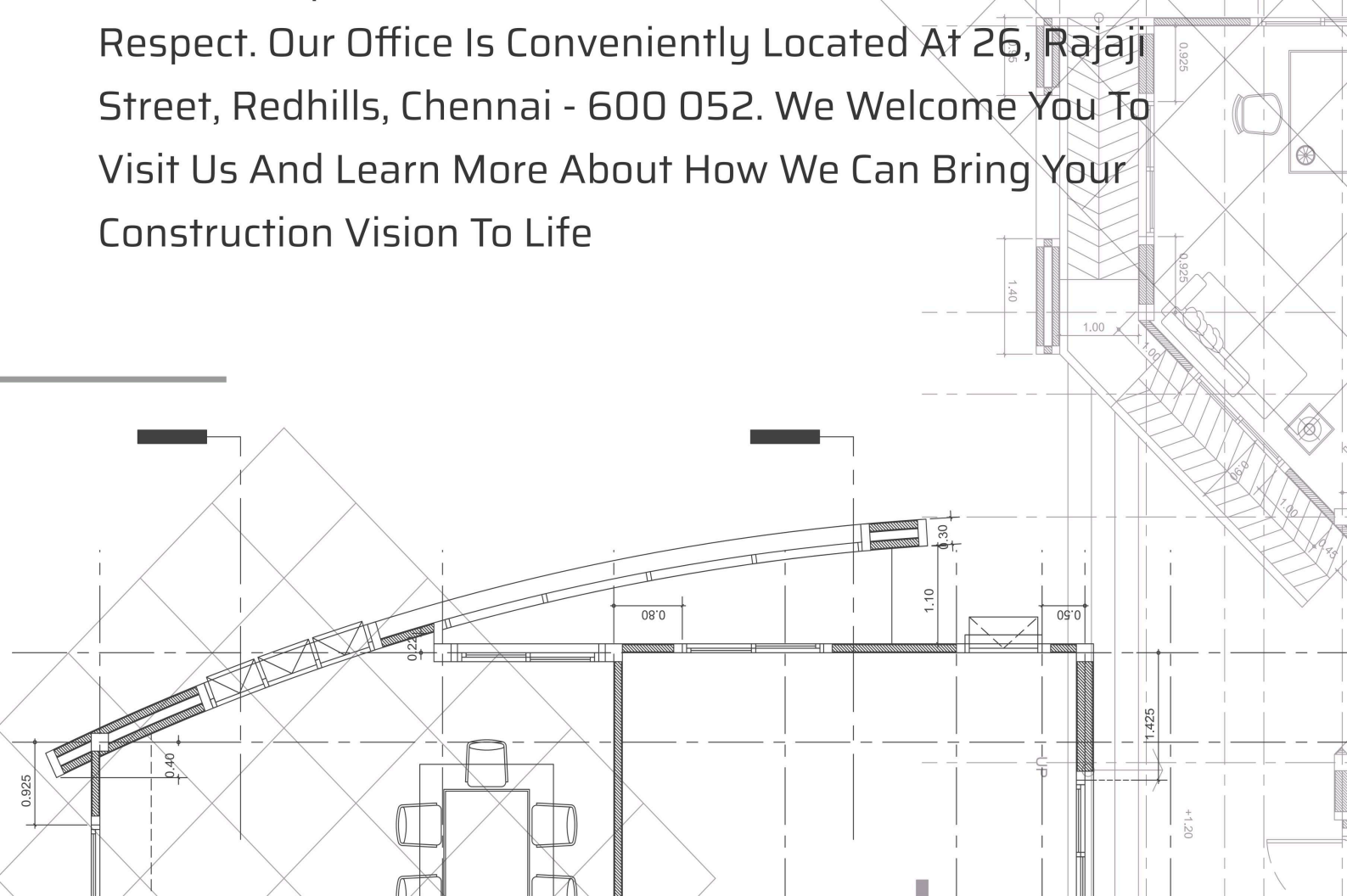
## Evergreen Constructions

We Evergreen Constructions, Pride Ourselves, On Delivering Exceptional Construction Solutions Tailored To Meet The Unique Needs Of Each Client. With A Commitment To Excellence, Innovation, And Sustainability, We Have Established Ourselves As A Trusted Partner In The Construction Industry. Here's Why You Should Choose Us For Your Next Project



# ABOUT US

Evergreen Constructions Is A Leading Construction Company Dedicated To Delivering Superior Quality, Innovative Solutions, And Exceptional Customer Service. With A Focus On Excellence, Integrity, And Sustainability, We Have Earned A Reputation As A Trusted Partner In The Construction Industry. From Concept To Completion, We Are Committed To Exceeding Our Clients' Expectations And Building Lasting Relationships Based On Trust, Professionalism, And Mutual Respect. Our Office Is Conveniently Located At 26, Rajaji Street, Redhills, Chennai - 600 052. We Welcome You To Visit Us And Learn More About How We Can Bring Your Construction Vision To Life





# WHY CHOOSE US

## EVERGREEN CONSTRUCTIONS

# WHY CHOOSE US

## Expertise:

Our Team Comprises Highly Skilled Professionals With Years Of Experience In The Construction Industry. From Architects And Engineers To Project Managers And Contractors, We Have The Expertise To Handle Projects Of Any Scale And Complexity.

## Quality Assurance:

We Adhere To Stringent Quality Standards Throughout Every Phase Of The Construction Process, Ensuring That Each Project Is Completed To The Highest Level Of Craftsmanship.

03



## WHY CHOOSE US

### Innovative Solutions:

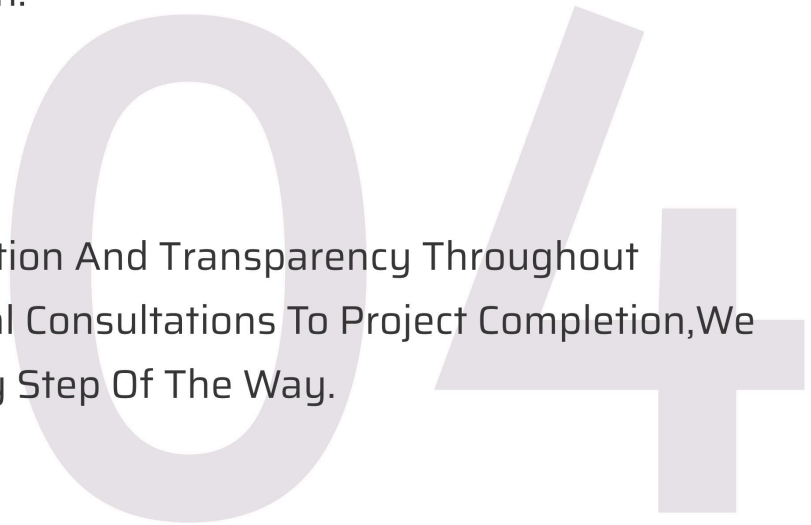
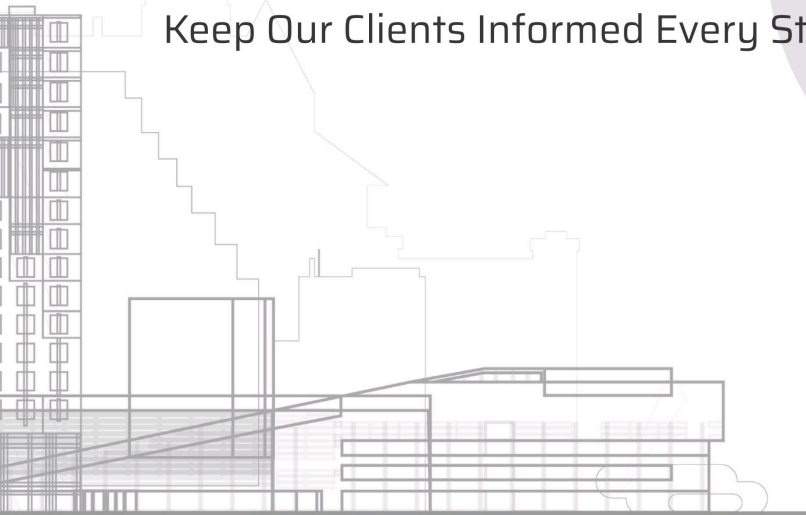
We Embrace Innovation And Leverage The Latest Technologies To Enhance Efficiency, Reduce Costs, And Deliver Superior Results. Our Commitment To Innovation Sets Us Apart From The Competition.

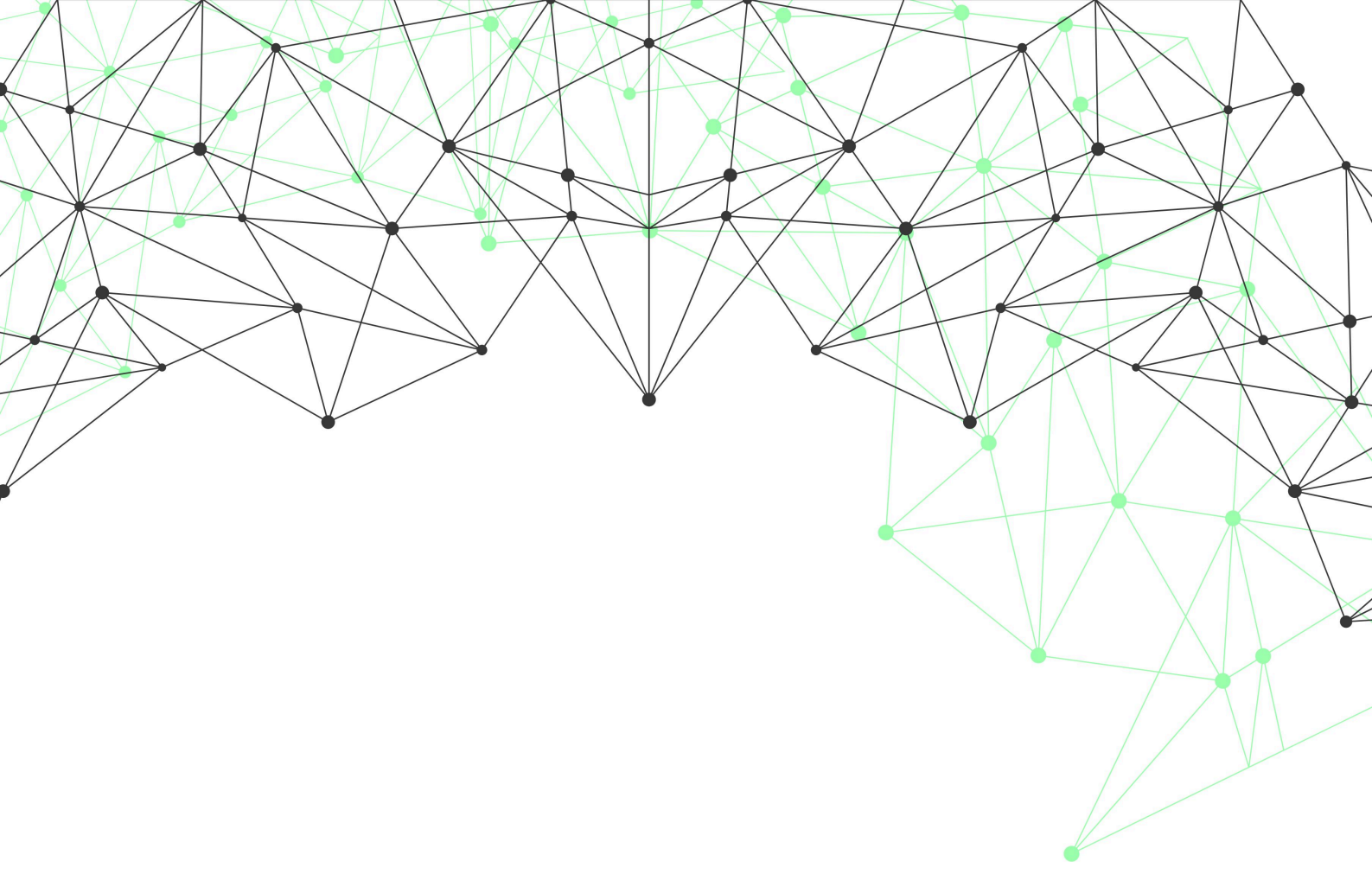
### Customer Satisfaction:

Our Priority Is Our Clients' Satisfaction. We Work Closely With Each Client To Understand Their Vision, Goals, And Budget, And We Strive To Exceed Their Expectations At Every Turn.

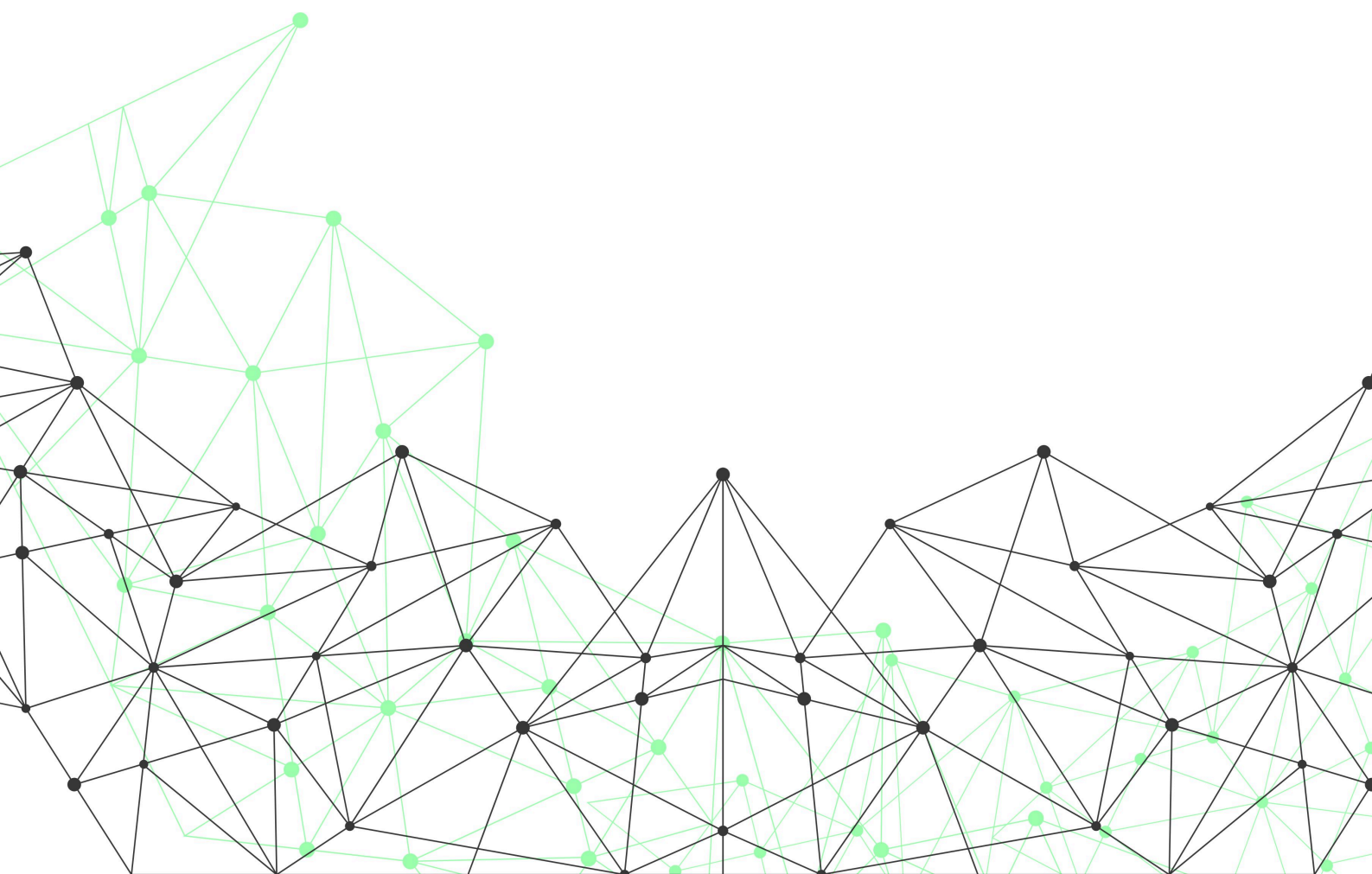
### Transparency:

We Believe In Open Communication And Transparency Throughout The Project Lifecycle. From Initial Consultations To Project Completion, We Keep Our Clients Informed Every Step Of The Way.





# OUR SERVICES



# OUR SERVICES

A solid green horizontal bar is positioned to the right of the "OUR SERVICES" header.

At Evergreen Constructions, We Offer A Comprehensive Range Of Services To Meet All Your Construction Needs:

## Planning:

From Conceptualization To Design Development, Our Expert Team Of Architects And Planners Works Closely With You To Create A Customized Plan That Aligns With Your Vision, Goals, And Budget.

## Designing:

Our Team Of Talented Architects And Designers Brings Your Ideas To Life With Innovative And Practical Designs. Whether You're Building A New Structure Or Renovating An Existing One, We Create Designs That Are Both Aesthetically Pleasing And Functional.





# OUR SERVICES

## Construction:

With Years Of Experience And A Commitment To Excellence, We Deliver High-Quality Construction Solutions For Residential, Commercial, And Industrial Projects. Our Skilled Craftsmen And Project Managers Ensure That Every Detail Is Executed To Perfection.

## Interiors:

Transform Your Space Into A Stunning And Functional Environment With Our Interior Design And Decoration Services. Whether You're Renovating An Existing Space Or Building From Scratch, Our Interior Designers Will Create A Customized Design Scheme That Reflects Your Style And Enhances Your Lifestyle.



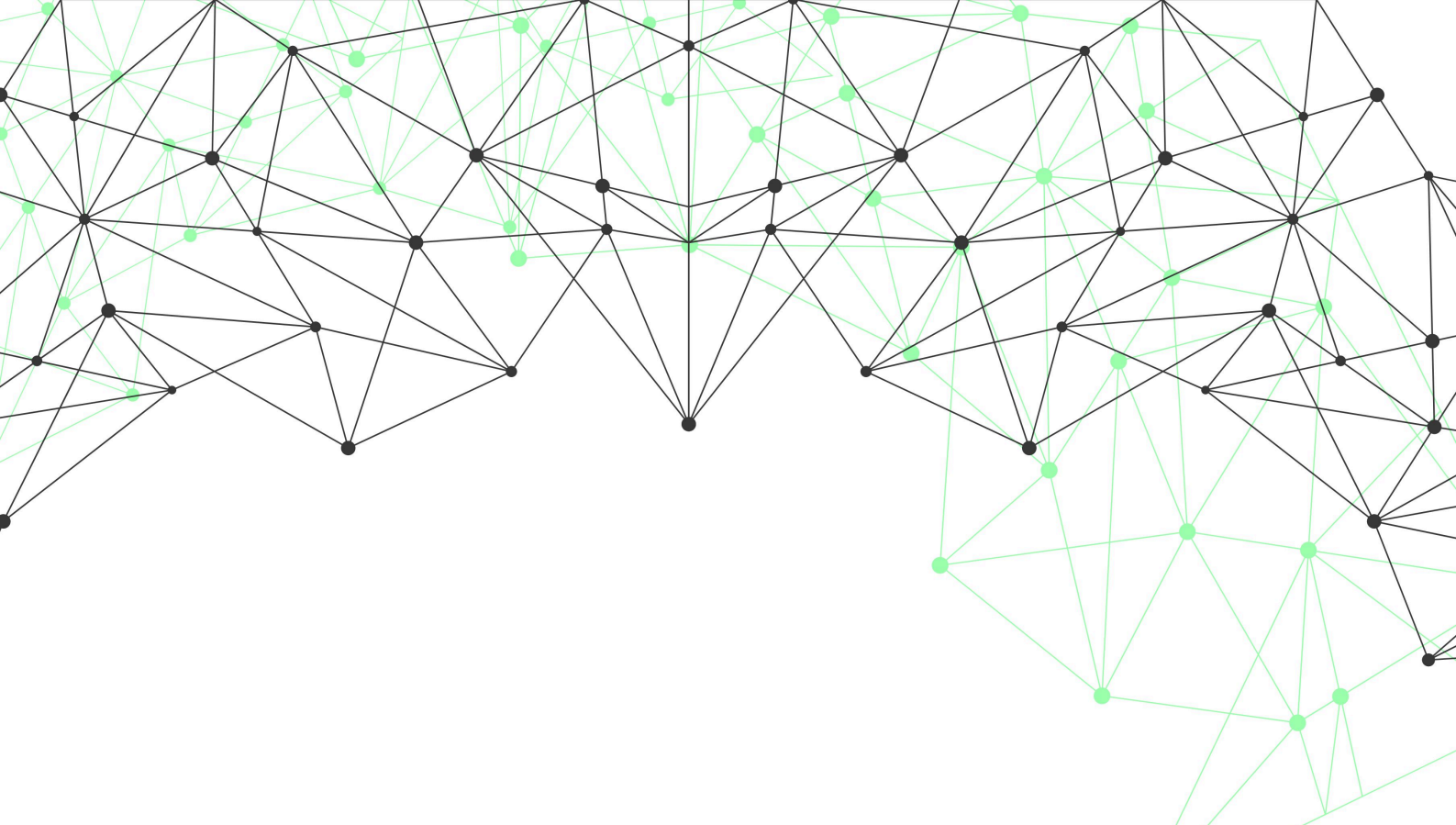
# OUR SERVICES

## Project Management:

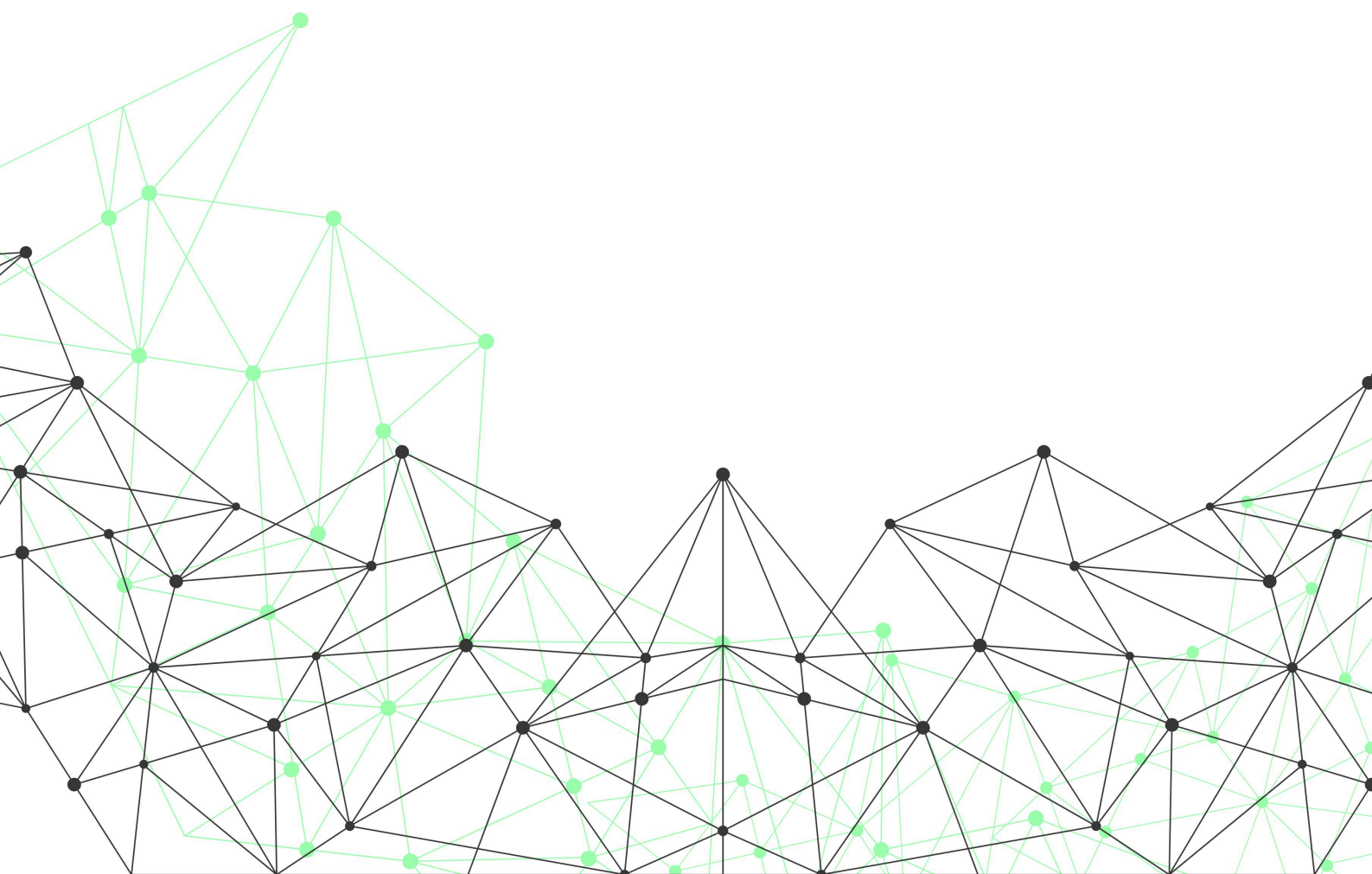
We Understand The Importance Of Preserving Your Investment For Years To Come. Our Maintenance Services Ensure That Your Property Remains In Optimal Condition, From Routine Inspections And Repairs To Preventative Maintenance Programs Tailored To Your Specific Needs.

From Planning And Construction To Interiors And Maintenance, Evergreen Constructions Is Your Trusted Partner For All Your Construction Needs. Contact Us Today To Learn More About How We Can Help Bring Your Vision To Life.





# EVERGREEN CONSTRUCTIONS PACKAGES



# ECONOMICAL PACKAGE

We're Here To Transform Your Fantasy Home Vision Into The Real World. Our Private Structure Bundles Offer Aptitude, Craftsmanship, And Scrupulousness For Your Ideal Living Space.

Browse Four Bundles Customized To Your Requirements: Usefulness With Style, Eco-Accommodating Living, Or Extravagance. Our Group Guarantees A Smooth Excursion From Idea To The End.

## ECONOMICAL

### Test & Reports

#### 1. Water Test

### Structure

1. Cement - Penna Or Equivalent
  2. Sand - Double Washed Msand
  3. Aggregate - 20 Mm & 40 Mm
  4. Bricks - Chamber Bricks
  5. Steel - Kamakshi, Arun Or Equivalent
  6. RCC Grade - M20
  7. Ceiling Height - 10 Feet (Finished Floor Level To Finished Floor Level)
  8. Basement Height 2.5' from Normal Ground Level
- 

# ECONOMICAL PACKAGE

## Flooring

1. Living & Dining -Vitrified Double Coat Tiles Of Cost Upto Rs.40/Sqft
2. Rooms & Kitchen - Vitrified Double Coat Tiles Of Cost Upto Rs.40/Sqft
3. Bathroom Wall Upto 7' Height - Glazed Tile Of Cost Upto Rs.30/Sqft
4. Balcony, Staircase - Anti-Skid Tiles Of Cost Upto Rs.30/Sqft
5. Kitchen Wall Upto 2' Height - Glazed Tile Of Cost Upto Rs.30/Sqft
7. Parking - Cement Mortor Finishing

## Plumbing

1. PVC Pipes - ISI Marked Prince Or Equivalen
2. CPVC Pipes - Astral, Or Equivalent
3. Sanitarywares & CP Fittings Upto Rs. 20,000 Per 1000Sqft

## Electrical

1. Switches & Sockets - Orbit White
2. Wires - Flame Retardant Low Smoke Wires By Orbit
3. MCB - Orbit

# ECONOMICAL PACKAGE

## Joineries

1. Main Door Frame - Teak Door With Teak Wood Frame Of 5" X 3"
2. Main Door - Teak Door Worth Rs. 12,000 Including Fixtures.
3. Internal Doors - Flush Door With Laminates Upto Rs.3,000 Including Fixtures.
4. Door Frames Of Sal Wood 4" X 2.5"
5. Bathroom Doors - PVC Door
6. Windows - Aluminium Sliding Windows With Glass Shutters

## Kitchen

1. Kitchen Sink - Stainless Steel Of Single Bowl Make Worth Rs.1,500
2. Cooktop - Granite Upto Rs.120/Sqft

## Painting

1. Exterior Painting - Asian Primer + Ace Exterior Emulsion Paint Or Equivalent
2. Interior Painting - Birla Putty + Tractor Emulsion Or Equivalent

# ECONOMICAL PACKAGE

## Miscellaneous :

1. Window Grills - Basic MS Grill With Enamel Paint At Rs.100/Sqft
2. Staircase Railing - MS Railing
3. Overhead Tank - ISI Double Layered 1000 Ltrs

## CLIENT SCOPE OF WORK (NON COVERED ITEMS)

1. Architectural, Structural Drawings & Elevation View.
2. Borewell With Motor Fixing Work.
3. Temporary Eb Connection Work & Bill Payment.
4. Approval Drawing Process.
5. Metro/Sewage Service Connections.
6. Electricity Charges During Construction.
7. CCTV Including Wiring.
8. Under Ground Sump.
9. Compound Wall Work.
10. Elevation Work As Per Client Requirement.
11. Final Roof Top Tile Work.
12. Over Head Tank.
13. Material Stock Yard ( Temporary Room For Cement)

# CLASSIC PACKAGE

"Changing Your Vision Into Shocking Reality, Our Private Structure Development Bundles Offer Mastery, Craftsmanship, And Tender Loving Care For Your Ideal Living Space."

"Our Four Tailored Packages Cater To Diverse Needs, From Functionality And Aesthetics To Eco-Friendliness And Luxury. Our Experienced Team Ensures A Smooth Journey From Concept To Completion."

## CLASSIC

### Test & Reports

1. Water Test
2. Concrete Strength Test

### Structure

1. Cement - Chettinad / Zuari Or Equivalent
2. Sand - Double Washed Msand
3. Aggregate - 20 Mm & 40 Mm
4. Bricks - Chamber Bricks
5. Steel - Suriyadev,ARS Or Equivalent
6. RCC Grade - M20
7. Ceiling Height - 10 Feet (Finished Floor Level To Finished Floor Level)
8. Basement Height 3.0' From Normal Ground Level

# CLASSIC PACKAGE

## Flooring

1. Living & Dining -Vitrified Double Coat Tiles Of Cost Upto Rs.50/Sqft
2. Rooms & Kitchen - Vitrified Double Coat Tiles Of Cost Upto Rs.40/Sqft
3. Bathroom Wall Upto 7' Height - Glazed Tile Of Cost Upto Rs.40/Sqft
4. Balcony, Staircase - Anti-Skid Tiles Of Cost Upto Rs.40/Sqft
5. Kitchen Wall Upto 3' Height - Glazed Tile Of Cost Upto Rs.40/Sqft
6. Parking - Cement Mortor Finishing

## Plumbing

1. PVC Pipes - ISI Marked Star,Prince Or Equivalen
2. CPVC Pipes - Astral, Ashirvad Or Equivalent
3. Sanitarywares & CP Fittings Upto Rs. 30,000 Per 1000Sqft

## Electrical

1. Switches & Sockets - Anchor Roma White
2. Wires - Flame Retardant Low Smoke Wires By V-GUARD,RR
3. MCB - Standard

# CLASSIC PACKAGE

## Joineries

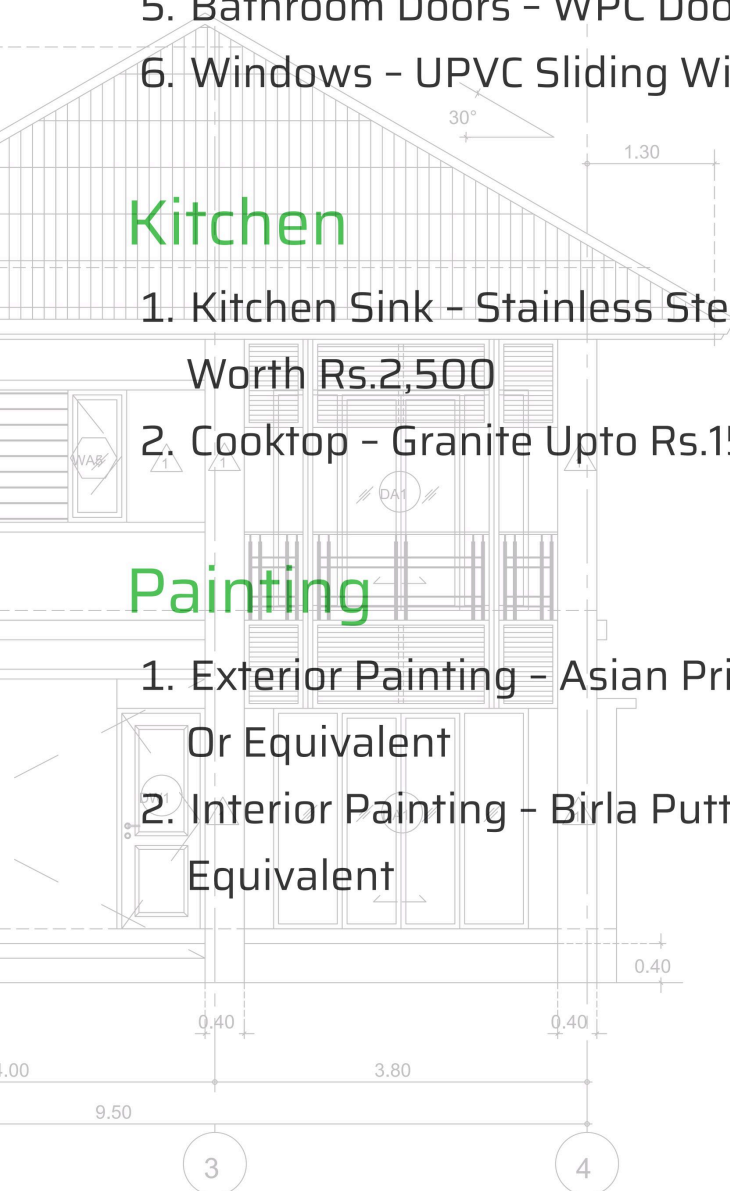
1. Main Door Frame - Teak Door With Teak Wood Frame Of 5" X 3.5"
2. Main Door - Teak Door Worth Rs. 25,000 Including Fixtures.
3. Internal Doors - Flush Door With Laminates Upto Rs.5,000 Including Fixtures.
4. Door Frames Of Sal Wood 4" X 2.5"
5. Bathroom Doors - WPC Door
6. Windows - UPVC Sliding Windows With Glass Shutters

## Kitchen

1. Kitchen Sink - Stainless Steel Of Single Bowl Make Worth Rs.2,500
2. Cooktop - Granite Upto Rs.150/Sqft

## Painting

1. Exterior Painting - Asian Primer + Ace Exterior Emulsion Paint Or Equivalent
2. Interior Painting - Birla Putty + Tractor Emulsion Shine Or Equivalent



# CLASSIC PACKAGE

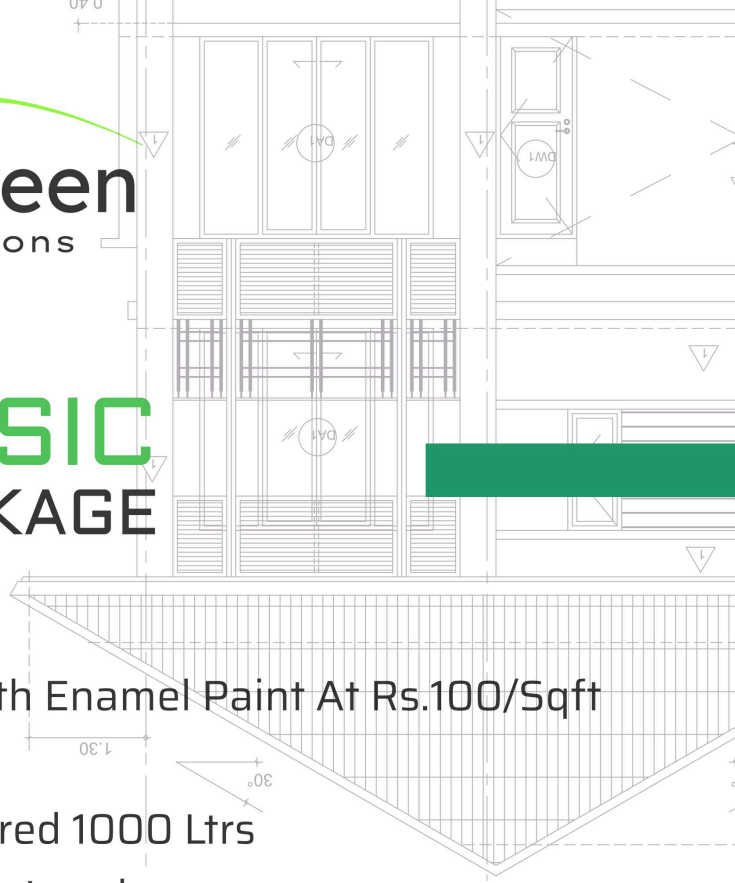
## Miscellaneous :

1. Window Grills - Basic MS Grill With Enamel Paint At Rs.100/Sqft
2. Staircase Railing - MS Railing
3. Overhead Tank - ISI Double Layered 1000 Ltrs
4. Anti - Termite Treatment At Three Levels

## CLIENT SCOPE OF WORK

### ( NON COVERED ITEMS)

1. Architectural, Structural Drawings & Elevation View.
2. Borewell With Motor Fixing Work.
3. Temporary Eb Connection Work & Bill Payment.
4. Approval Drawing Process.
5. Metro/Sewage Service Connections.
6. Electricity Charges During Construction.
7. CCTV Including Wiring.
8. Under Ground Sump.
9. Compound Wall Work.
10. Elevation Work As Per Client Requirement.
11. Finial Roof Top Tile Work.
12. Over Head Tank.
13. Material Stock Yard ( Temporary Room For Cement)



15

# ULTIMATE PACKAGE

Transform Your Dream Home Vision Into Reality With Our Residential Building Construction Packages, Offering Expertise, Craftsmanship, And Attention To Detail For Your Perfect Living Space.

Browse Four Bundles Customized To Your Requirements: Usefulness With Style, Eco-Accommodating Living, Or Extravagance. Our Group Guarantees A Smooth Excursion From Idea To The End.

## ULTIMATE

### Test & Reports

1. Water Test
2. Concrete Strength Test

### Structure

1. Cement - Coramendal / Ultratech
2. Sand - Double Washed Msand
3. Aggregate - 20 Mm & 40 Mm
4. Bricks - Wirecut Bricks
5. Steel - Suriyadev,ARS Or Equivalent
6. RCC Grade - M25
7. Ceiling Height - 10 Feet (Finished Floor Level To Finished Floor Level)
8. Basement Height 3.0' from Normal Ground Level

# ULTIMATE PACKAGE

## Flooring

1. Living & Dining -Vitrified Double Coat Tiles Of Cost Upto Rs.60/Sqft
2. Rooms & Kitchen - Vitrified Double Coat Tiles Of Cost Upto Rs.50/Sqft
3. Bathroom Wall Upto 7' Height - Glazed Tile Of Cost Upto Rs.50/Sqft
4. Balcony, Staircase - Anti-Skid Tiles Of Cost Upto Rs.50/Sqft
5. Kitchen Wall Upto 4' Height - Glazed Tile Of Cost Upto Rs.50/Sqft
6. Parking - -Skid Tiles Of Cost Upto Rs.40/Sqft

## Plumbing

1. PVC Pipes - ISI Marked Star,Prince Or Equivalen
2. CPVC Pipes - Astral, Ashirvad Or Equivalent
3. Sanitaryware's & CP Fittings Upto Rs. 40,000 Per 1000Sqft
4. Mirror, Soap Dish, Towel Rail - Worth Rs.3000 Per 1000 Sqft

## Electrical

1. Switches & Sockets - Anchor Roma White
2. Wires - Flame Retardant Low Smoke Wires By FINOLEX
3. MCB - LEGRAND

# ULTIMATE PACKAGE

## Joineries

1. Main Door Frame - Teak Door With Teak Wood Frame Of 5" X 3.5"
2. Main Door - Teak Door Worth Rs. 30,000 Including Fixtures.
3. Internal Doors - Flush Door With Laminates Upto Rs.6,000 Including Fixtures.
4. Door Frames Of Sal Wood 4" X 2.5"
5. Bathroom Doors - WPC Door
6. Windows - UPVC Sliding Windows With Glass & Mesh

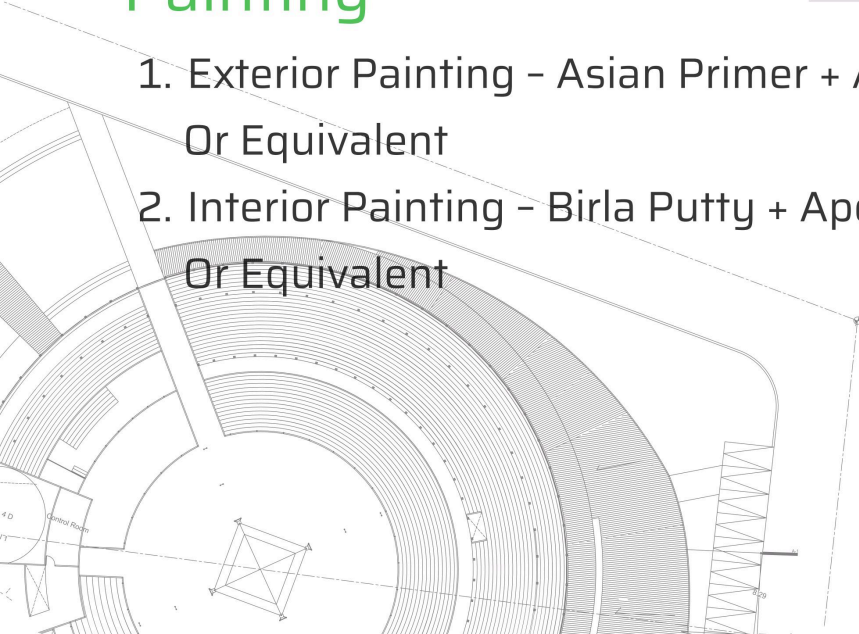
## Kitchen

1. Kitchen Sink - Stainless Steel Of Single Bowl Make Worth Rs.4,500
2. Cooktop - Granite Upto Rs.200/Sqft

## Painting

1. Exterior Painting - Asian Primer + Ace Exterior Emulsion Paint Or Equivalent
2. Interior Painting - Birla Putty + Apcolite Premium Emulsion Or Equivalent

18





## ULTIMATE PACKAGE

### Miscellaneous :

1. Window Grills - Basic MS Grill With Enamel Paint At Rs.150/Sqft
2. Staircase Railing - SS Railing
3. Overhead Tank - ISI Double Layered 2000 Ltrs
4. Anti - Termite Treatment At Three Levels
5. Rain Water Harvesting

### CLIENT SCOPE OF WORK (NON COVERED ITEMS)

1. Architectural, Structural Drawings & Elevation View.
2. Borewell With Motor Fixing Work.
3. Temporary Eb Connection Work & Bill Payment.
4. Approval Drawing Process.
5. Metro/Sewage Service Connections.
6. Electricity Charges During Construction.
7. CCTV Including Wiring.
8. Under Ground Sump.
9. Compound Wall Work.
10. Elevation Work As Per Client Requirement.
11. Final Roof Top Tile Work.
12. Over Head Tank.
13. Material Stock Yard ( Temporary Room For Cement)



## CONTACT US



Ready To Start Your Next Construction Project? Get In Touch With Us Today To Discuss Your Needs And Schedule A Consultation. You Can Reach Us At:



**Mail Id:** [rajeshkanna1929@gmail.com](mailto:rajeshkanna1929@gmail.com)

**Phone No:** +91 9345863699 / +91 9444868566

**Address:** #26, Rajaji Street Redhills, Chennai, 600052

# 20